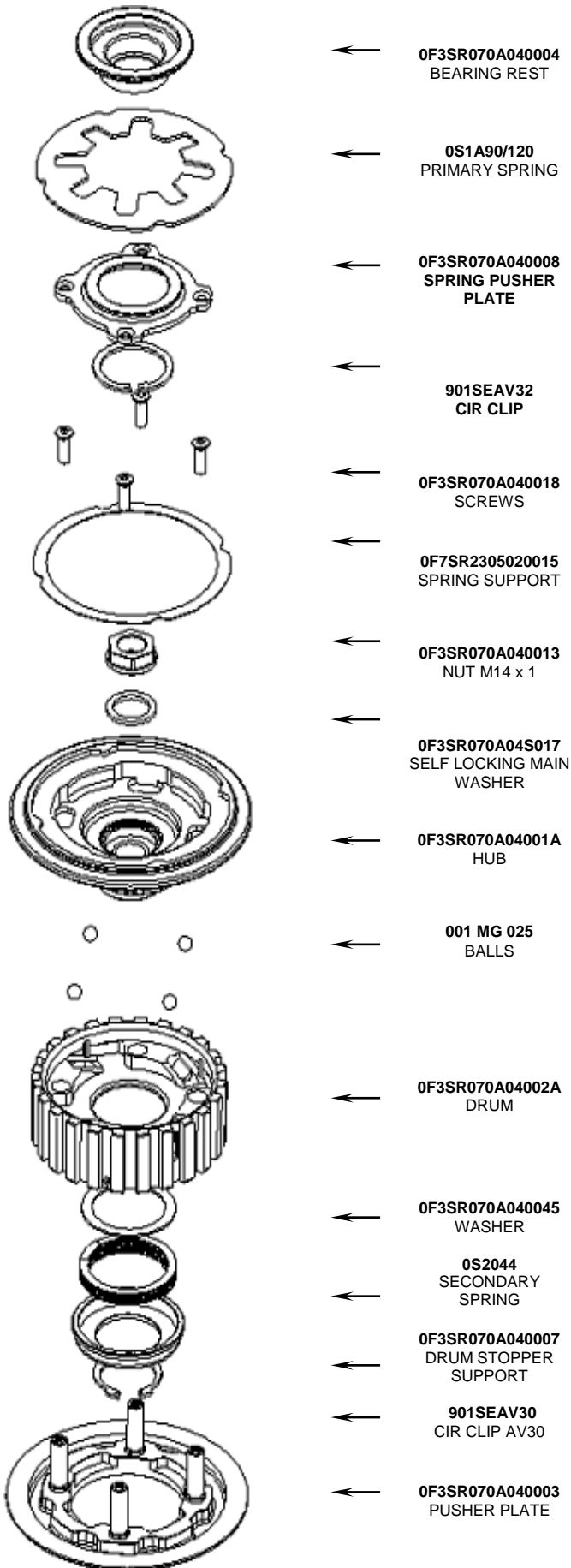


0F3SR070A04A000 FOH-D190

PITBIKE DAYTONA 190 SLIPPER CLUTCH

INSTALLATION INSTRUCTIONS



← **0F3SR070A040004**
BEARING REST

← **0S1A90/120**
PRIMARY SPRING

← **0F3SR070A040008**
SPRING PUSHER
PLATE

← **901SEAV32**
CIR CLIP

← **0F3SR070A040018**
SCREWS

← **0F7SR2305020015**
SPRING SUPPORT

← **0F3SR070A040013**
NUT M14 x 1

← **0F3SR070A04S017**
SELF LOCKING MAIN
WASHER

← **0F3SR070A04001A**
HUB

← **001 MG 025**
BALLS

← **0F3SR070A04002A**
DRUM

← **0F3SR070A040045**
WASHER

← **0S2044**
SECONDARY
SPRING

← **0F3SR070A040007**
DRUM STOPPER
SUPPORT

← **901SEAV30**
CIR CLIP AV30

← **0F3SR070A040003**
PUSHER PLATE

The slipper system group, made up of:

- HUB (0F3SR070A04001A);
- BALLS (001 MG 025);
- DRUM (0F3SR070A04002A);
- SECONDARY SPRING;
- DRUM STOPPER (0F3SR070A040007);
- CIRCLIP (901SEAV30)

supplied as already assembled (see Fig.1)..

Install the plates of the original clutch on the slipper system group, keeping the same sequence and face orientation of each plate. Total height of the plates kit should be 25.5mm ± 0.2mm.

Align the teeth of the friction plates, in order to prepare them for an easy insertion into the outer basket during the following installation step.. Place the pressure plate (0F3SR070A040003) on the plates kit.

Insert the group obtained on the gear shaft (Fig.2).

ATTENTION: between the outer basket and the hub (0F7SR230J02A01M) must be kept the same washer used with the original clutch. It'll be necessary to rotate the gear shaft to find the most correct position in order to align at the same time:

- the gear shaft spline with the one on the hub
- the outer basket teeth housings with the friction plates teeth;

The preload group, made up of:

- BEARING REST (0F3SR070A040004)
- CAGED BEARING (003 MG 007)
- SPRING PRELOAD RING (0F3SR070A040008)
- PRIMARY SPRING (0S1A90)
- STEEL RODS FLANGE
- CIRCLIP (901SEAV32)

is supplied as already assembled (see Fig.3). In case of need, in order to un-install the parts, just extract the circlip(AV32) using a pair of pliers.

Insert the bearing and the pushrod pin of the original clutch into the bearing rest (0F3SR070A040004).

Verify that the primary spring support (0F7SR230J020015) is correctly inserted into the housing on the hub (0F3SR070A04001A).

Position the preload group on the hub (0F3SR070A04001A) verifying the correct insertion of the primary spring (0S1A90) into the housing on the hub.

Fix the preload group with the four screws, after having aligned the holes of the spring pusher plate.

Once the assembly is completed, mount the clutch cover, and then repeatedly operate the clutch lever to check that the pressure plate correctly performs the opening and closing movements. In case of frequent un-install operations, check the steel rods tightening condition on the pressure plate.

GENERAL SAFETY REGULATIONS

- IN THIS SHEET ARE REPORTED THE DIRECTIONS TO PERFORM CORRECTLY THE CLUTCH ASSEMBLY OPERATIONS.
- STM RESERVES THE RIGHT, WITHOUT NOTICE, TO INTRODUCE ANY TECHNICAL CHANGE WHENEVER DEEMED IT TO BE NECESSARY TO IMPROVE FUNCTION AND QUALITY OF THE PRODUCTS.
- ASSEMBLY OPERATIONS MUST BE PERFORMED BY A SKILLED TECHNICIAN AND MUST BE SCRUPULOUSLY OBSERVED.
- BEFORE MOUNTING THE CLUTCH MAKE A COMPLETE INSPECTION OF THE MOTORBIKE COMPONENTS, IN ORDER TO VERIFY THE POSSIBLE PRESENCE OF FAULTS OR ANOMALIES ON THE VEHICLE.
- MAKE SURE THAT THERE ARE NO MISSING/DAMAGED PARTS IN THE CLUTCH KIT.
- SOME PARTS OF THE CLUTCH AND ITS COMPONENTS CAN HAVE SHARP SURFACE: HANDLE WITH CARE.
- SOME COMPONENTS OF THE CLUTCH, BECAUSE OF THEIR SMALL DIMENSIONS CAN BE SWALLOWED: KEEP AWAY FROM CHILDREN.

STM ITALY

Via A. Olivetti 15 - 10020 - Riva presso Chieri (TO)

www.stmitaly.com - contact@stmitaly.com



